



Brewing Filtration

Training guide for products and applications

aerospace
climate control
electromechanical
filtration
fluid & gas handling
hydraulics
pneumatics
process control
sealing & shielding



ENGINEERING YOUR SUCCESS.

Contents



- Introduction 3
- Schematic 4
- Application 1. Cold stabilization 5
- Application 2. Pre-stabilization 6
- Application 3. Trap filtration 7
- Application 4. Sterilization of gases 8
- Application 5. Water utilities 9
- Application 6. Gas utilities 10
- Filter housings 11
- Product selection process 12
- Selecting the final filter 13
- Products 14-16

Parker domnick hunter has a continuous policy of product development and although the company reserves the right to change specifications, it attempts to keep customers informed of any alterations. This publication is for general information only and customers are requested to contact our Process Filtration Sales Department for detailed information and advice on a product's suitability for specific applications. All products are sold subject to the company's standard conditions of sale.

Introduction

The production of beer is an ancient art which has been practiced and modified over thousands of years to yield the wonderful variety of beers and ales we have available today. At the heart of the brewing process lies a totally natural sequence of events – the anaerobic fermentation of malted barley by yeast.

The raw ingredients required for making beer are consistent across most beer production processes, they are; barley, yeast, hops and water. It is through careful modification of these key ingredients and the associated production recipes that gives rise to the huge variety of beers and ales available for us all to enjoy.

Across the beer and ale varieties, there are similarities common to the production stages necessary to control this natural process as consistently as possible to produce the perfect brew.

These can generally be classified as:

- Fermentation
- Clarification
- Stabilization
- Packaging

Each stage of the process typically requires dedicated technology and equipment and there is a huge range of choice and flexibility in approaches. However, there is no one single, universally accepted option to perform each operation as best practice, and the choice of approach is typically guided by the performance repeatability of the equipment versus the long term running costs involved, or in short, the operational efficiency.

Normal flow filtration techniques are becoming increasingly adopted by head brewers throughout the process as the benefits of this technology are being realized throughout the industry, by the micro-brewery and large consolidated global brewery alike.

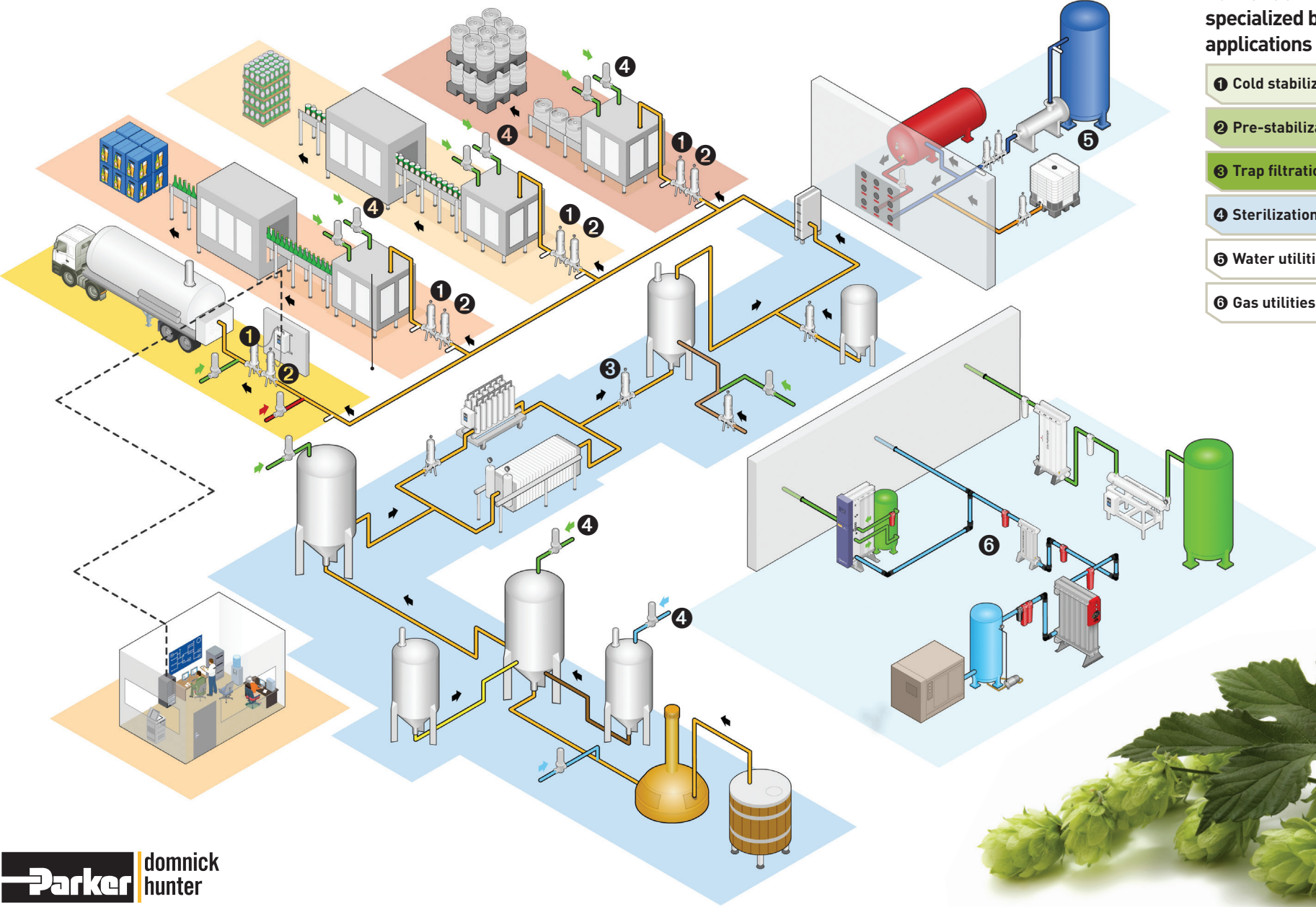
Parker domnick hunter continually offer significant process benefits to brewers across the globe. By combining specialist brewing knowledge with a dedicated product range we deliver:

- World class manufacturing and quality systems
- Consistent filter performance developed for specific brewing applications
- Commitment to reduce waste and energy consumption throughout the brewing process
- Process efficiency improvements through dedicated technical support

This document will focus on beer stabilization operations after fermentation and is intended to guide the optimum choice of filter product for a given application within the brewery, so that the benefits of Parker domnick hunter's capability can be maximized by the end user and the perfect beer is produced and enjoyed time after time.



Typical processes



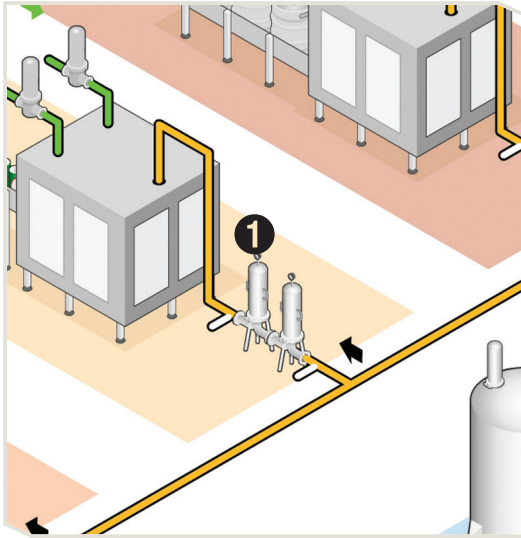
**Parker domnick hunter
specialized brewing
applications**

- 1 Cold stabilization
- 2 Pre-stabilization
- 3 Trap filtration
- 4 Sterilization of gas
- 5 Water utilities
- 6 Gas utilities



Application 1. Cold stabilization

Understanding the application



Cold stabilization refers to the filtration of beer to remove any spoilage microorganisms before it is packaged.

There are a number of spoilage organisms which must be removed from the beer to prevent spoilage and they are typically yeast, acetic acid bacteria and lactic acid bacteria.

The level of filtration will depend upon the expected shelf-life of the beer and the susceptibility to spoilage. Typically, for most large breweries, 12 months shelf-life and zero yeast or bacteria are the accepted norms once packaged into bottles or cans.

Until recently, the more commonly accepted method of achieving microbial stabilization was through pasteurization, either tunnel (~60°C for ~10 minutes) or flash (~70°C for seconds). Both forms of pasteurization compromise the process.

Disadvantages of pasteurization:

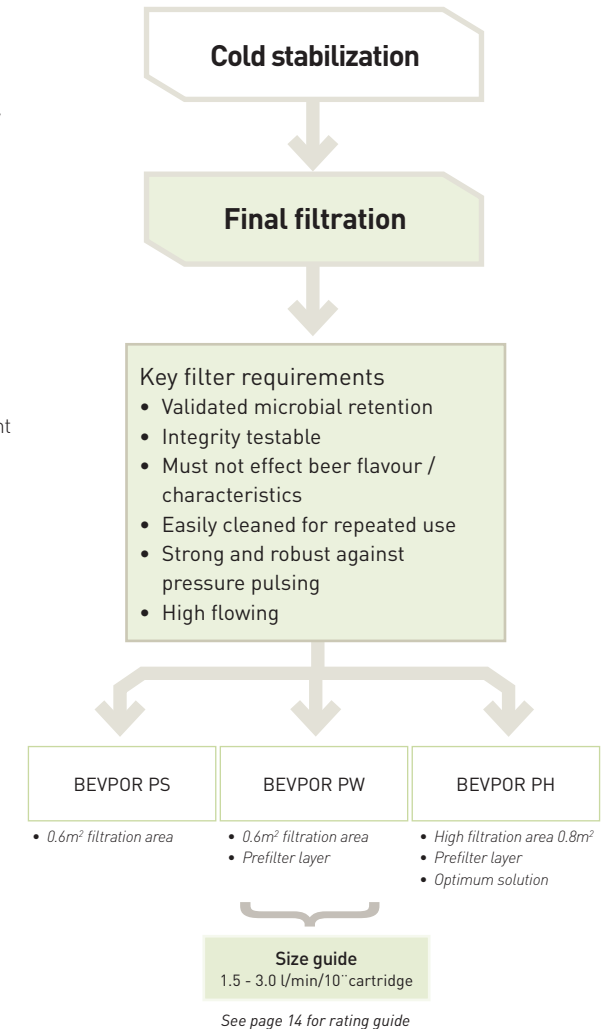
- Does not remove heat resistant spores
- May oxidize the beer and heavily compromises flavour
- Highly energy intensive
- Requires a big water demand

Benefits of cold stabilization:

- Removes all microorganisms
- Retention ability of filters can be verified by testing prior to use
- Minimal effect on beer flavour / characteristics
- Much reduced water or energy requirements
- Delivers a longer shelf-life

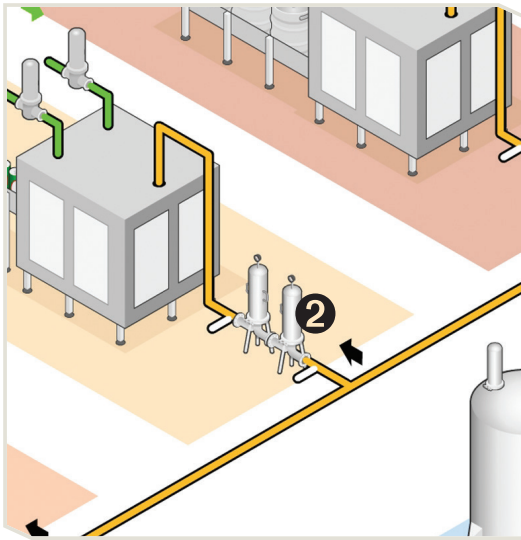
More frequently, brewers are turning to cold stabilization as a way of ensuring long shelf-life of packaged product. This movement has primarily been driven by the high energy and water consumption demanded by pasteurization operations coupled with advances in membrane technology which has returned longer filter life.

Parker domnick hunter have produced the range of BEVPOR filters to provide validated microbial retention, whilst being capable of frequent cleaning in place (CIP) for repeated use.



Application 2. Pre-stabilization

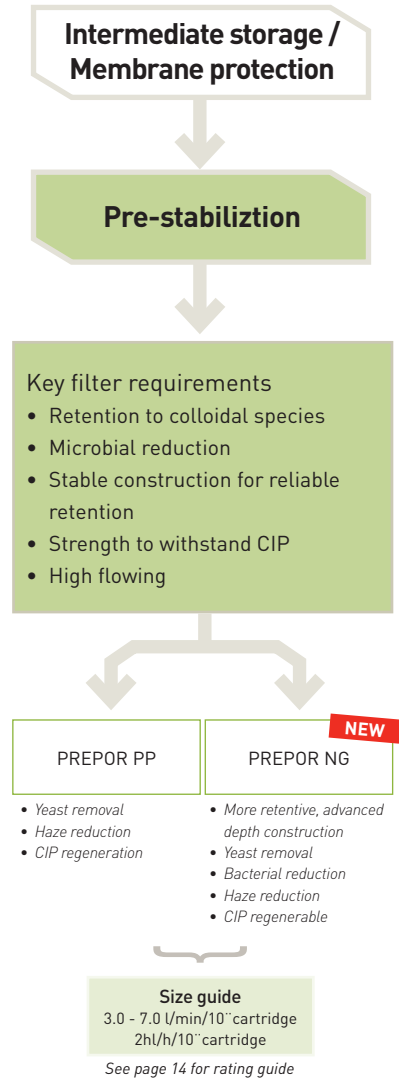
Understanding the application



Pre-stabilization refers to the fine filtration of bright beer, beer which has already been clarified, to reduce the level of microorganisms and turbidity prior to further downstream processing / storage.

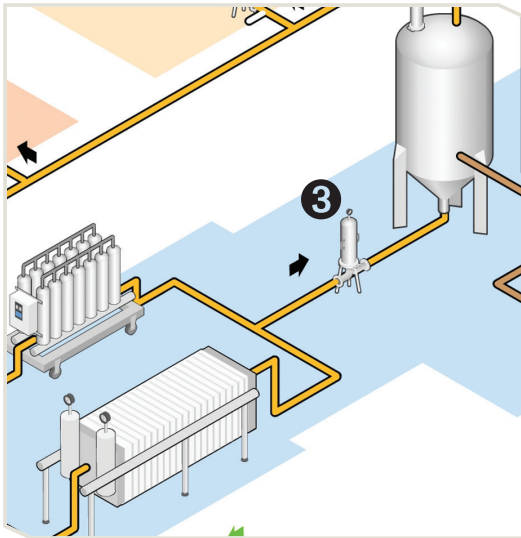
In large breweries, the ability to hold beer in a stable condition prior to packaging is of benefit to filling operations. Filtering the beer prior to storage to reduce the microbial loading will protect the quality of the brew during storage, allow flexibility in filling operations and improving the efficiency of the downstream systems.

Parker domnick hunter have produced the range of PREPOR filters to excel in pre-stabilization filtration applications. The cartridges will reduce the microbial loading of the beer whilst retaining colloids which can subsequently cause haziness in the finished package and protect membrane systems downstream.



Application 3. Trap filtration

Understanding the application



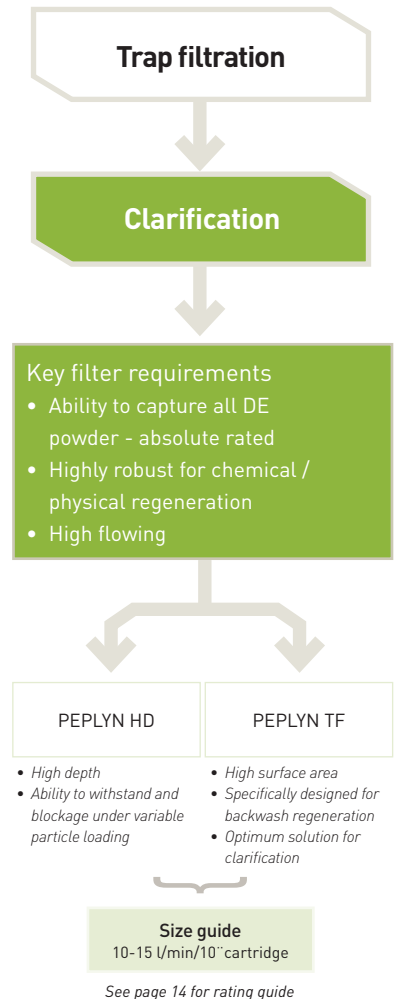
After fermentation the brew, or “green beer”, will contain a high degree of solids and suspended material such as; wort (malted barley residue), yeast cells, fats and proteins. This typically forms sediment at the bottom of the fermentation vessel and is sometimes referred to as *lees*. In its present state the beer will appear hazy and will deteriorate if left untreated. In order to produce clear, visually appealing beer with a certain shelf-life once packaged, the brew will require clarification and stabilization.

The first stage of this process will be to separate the solid lees from the liquid brew. There are various techniques available to do this, including centrifugation, physical stabilization by adding agents such as PVPP and isinglass, cross-flow filtration or powder filtration using diatomaceous earth (DE) or keiselguhr. All of these processes are not absolute and some solid particles will still persist in the beer requiring filtration.

The trap filter system is designed to capture any solid particulate which has been left behind by the initial separation stage following fermentation. The objective of this filtration stage is to provide a consistent level of particulate filtration so that a certain quality of bright beer is delivered to intermediate storage. A consistent quality of beer provided at this stage in the process will help ensure maximum efficiency of the downstream operations used for microbial stabilization.

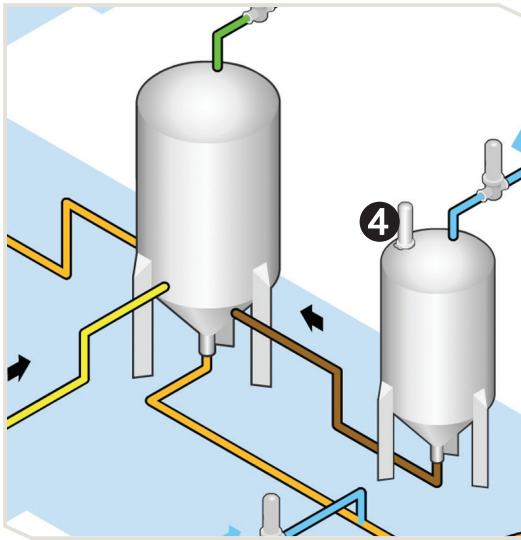
PEPLYN TF filters have been specifically designed to capture DE particles which will be periodically shed from powder filtration stages. The high area filter media will return high beer flow, whilst providing an absolute cut off to solid particulate. The construction of the HA filter has been optimized for repeated backwashing, so that filter regeneration and continual operation can be achieved.

PEPLYN HD is the product of choice where backwash is not required. The construction of the HD filter again returns absolute cut off to retain solid particulate and has been designed to resist blockage under variable particle loading conditions that are expected in this application.



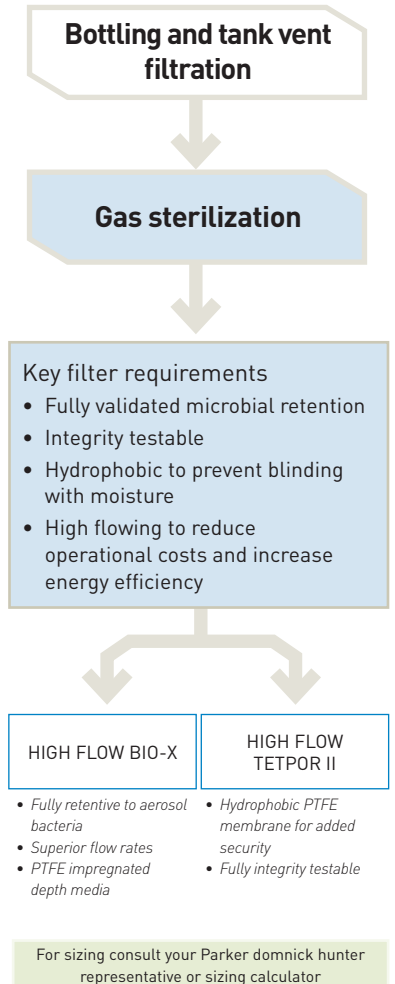
Application 4. Sterilization of gases

Understanding the application

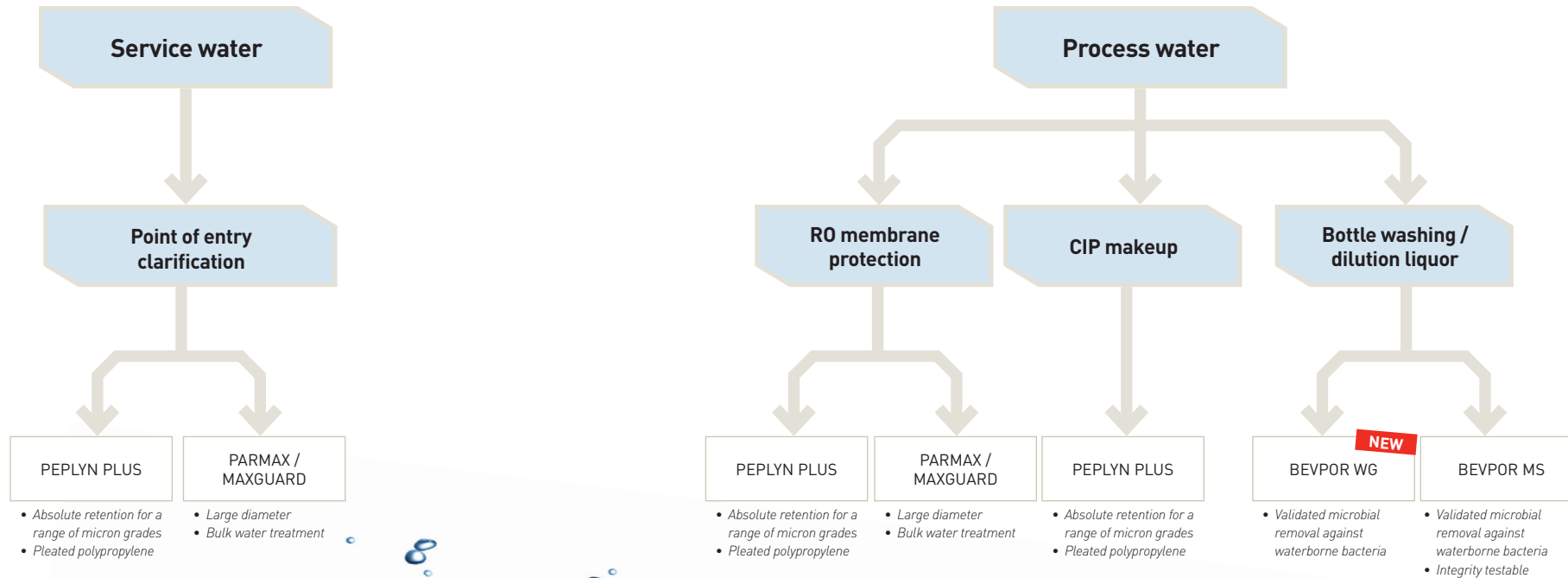


Compressed gases which come into direct contact with ingredients, the finished product, packaging materials, storage vessels or the manufacturing machinery, are termed critical and require sterile filtration to safeguard against a potential contamination of the brew.

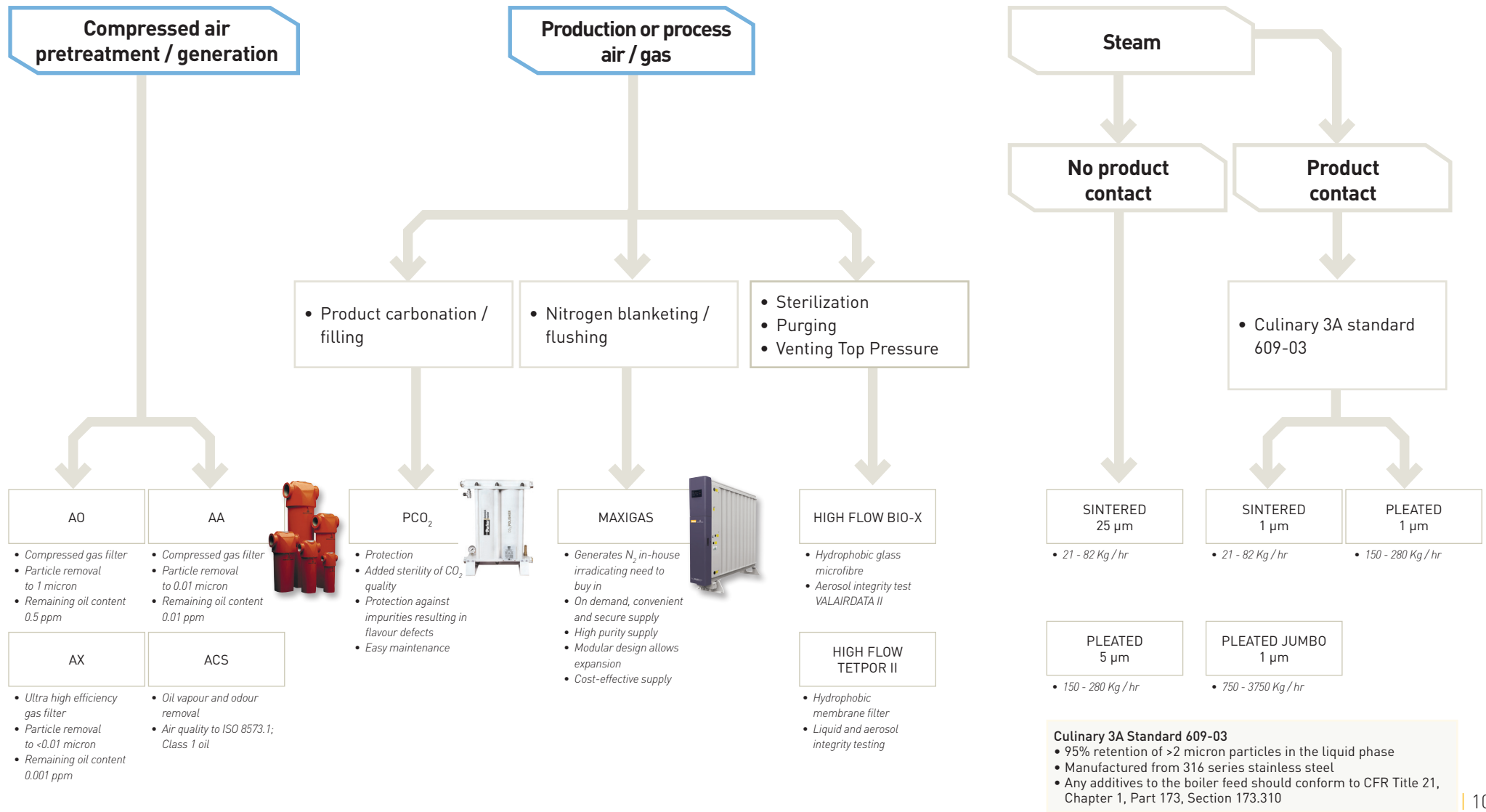
For aseptic filling operations, maintenance of machine sterility and the associated packaging such as bottles and caps becomes critically important. Where flash pasteurization or cold stabilization is used, the filling machine will typically require at least one sterile gas filter to remove microorganisms from the nitrogen or CO₂.



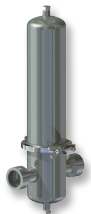
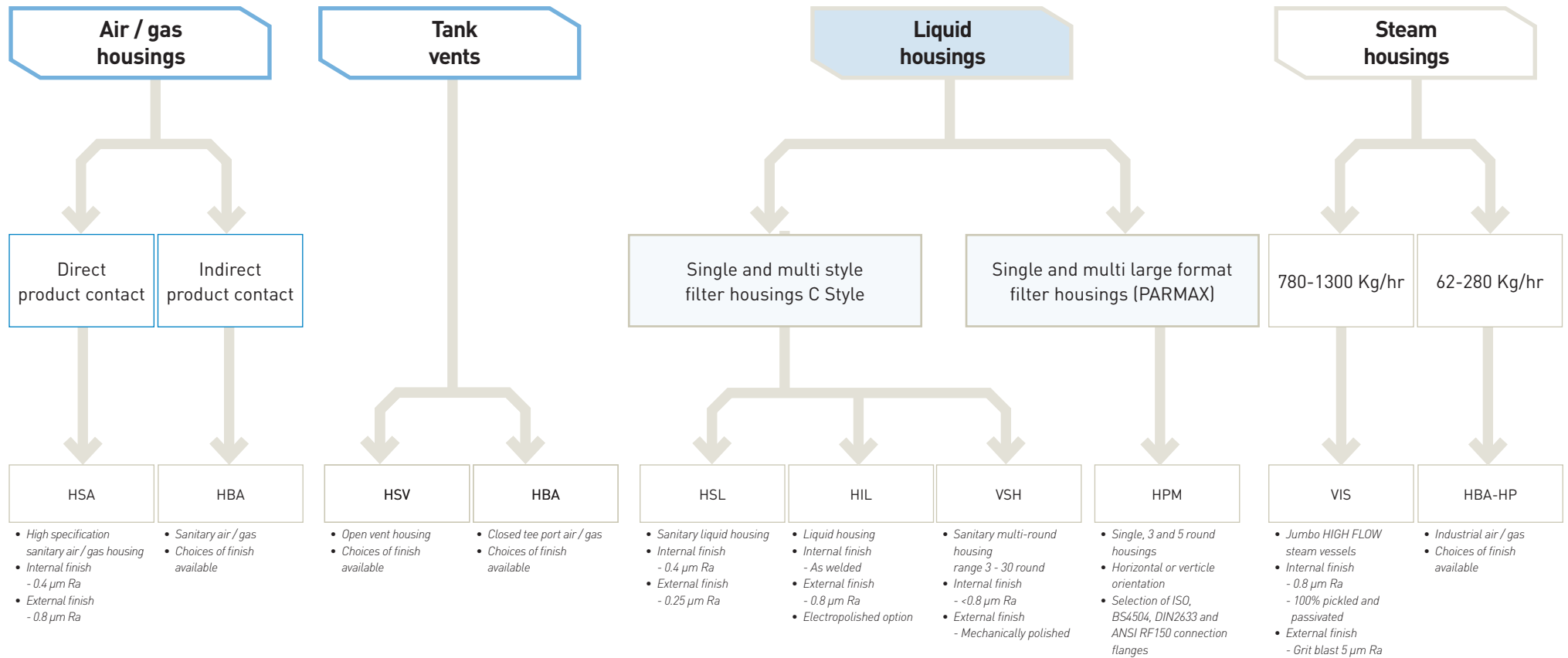
Application 5. Water utilities



Application 6. Gas utilities



Filter housings



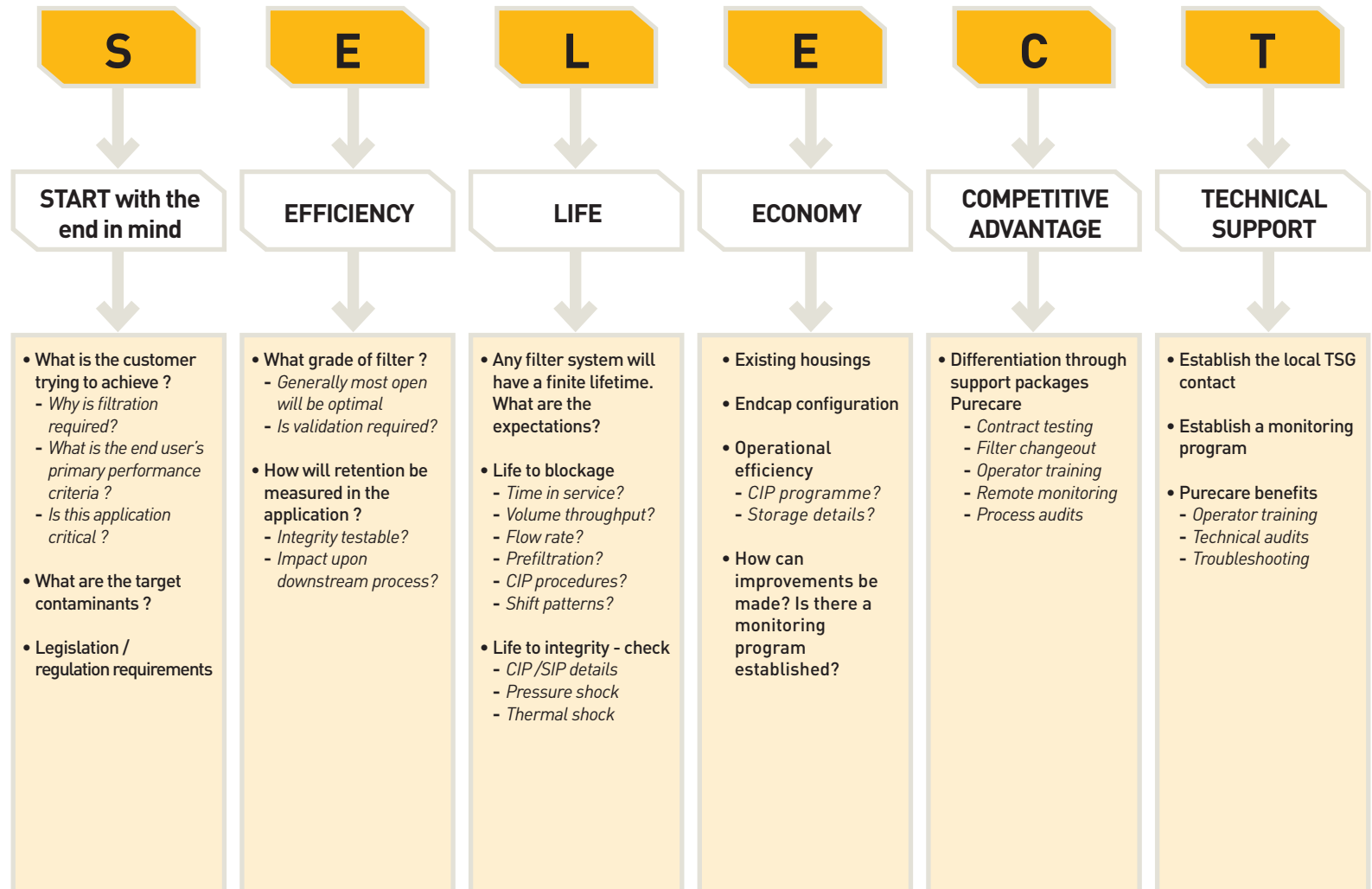
Product selection process

There is no one single solution to any filtration application, it is a balance of factors which dictates performance and cost-effectiveness.

We can provide a guide to select and size products, however, the optimum system specification should be defined through careful assessment of the application and then end users' requirements.

The Purecare programme outlines the required information prior to establishing a filtration solution and the assessment methods used to identify the suitability of any Parker domnick hunter solution.

The SELECT process builds on the principles used to select the optimum filtration solution for the end user. Starting with the end in mind, following this outlined procedure will help you to identify a suitable filtration solution.



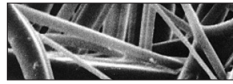
Selection matrix



	PARMAX / MAXGUARD	PROPLEAT	PEPLYN PLUS	CARBOFLOW MX	PEPLYN HD	PEPLYN TF	PREPOR PP	PREPOR NG	BEVPOR PS	BEVPOR PW	BEVPOR PH	BEVPOR WG	BEVPOR MS	HIGH FLOW BIO-X	HIGH FLOW TETPOR II	
Water Treatment	Point of entry clarification	1	3	2												
	Dechlorination	P	P		1											
	RO membrane protection	P	2	1												
	Bottle washing / Dilution liquor			P								2	1			
Clarification	Trap filtration				2	1										
Pre-stabilization	BBT protection						2	1								
	Membrane protection						2	1								
Cold Stabilization	Final filtration							P	3	2	1					
Gas Sterilization	Tank venting													2	1	
	Nitrogen blanketing													2	1	

Trap filtration

PEPLYN HD



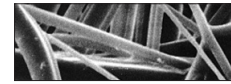
Polypropylene

5, 10, 15 micron

- Graded density and increased depth resulting in high dirt holding capacity
- Ideally suited to high volume, forward flow processes

PEPLYN HD has been developed using graded pore density depth polypropylene media for clarification of beer. The PEPLYN HD has outstanding particulate holding capacity through its multi-layer depth construction providing optimized filtration for beer with high particulate loading and size distribution.

PEPLYN TF



Polypropylene

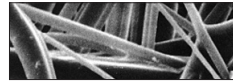
5, 10, 15 micron

- Graded density results in high dirt holding capacity
- Optimized pleat configuration maximizes backwash efficiency

PEPLYN TF filters have been specially designed to capture particles on the surface of the media so that they can be easily removed through backwash, therefore allowing easy regeneration and long service lifetimes. The high area filter media will return high beer flow, whilst providing an absolute retention to solid particulate.

Pre-stabilization - membrane protection and BBT protection

PREPOR PP



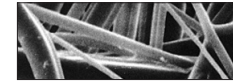
Polypropylene

0.6 - 1.0 micron

- Yeast and bacterial reduction
- Strong, pleated polypropylene construction for backwash and chemical CIP

PREPOR PP filter cartridges will significantly reduce the numbers of yeast and spoilage organisms from beverage products, to provide extremely cost effective microbial stabilization.

PREPOR NG



Polypropylene

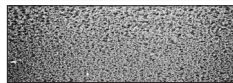
0.5 - 1.0

- Validated yeast removal and bacterial reduction
- Graded density construction for increased retention and throughput
- Strong, pleated polypropylene construction for backwash and chemical CIP

Combining a superior level of microbial retention with a strong and robust construction to withstand frequent CIP and backwash, PREPOR NG filters represent the optimum choice for pre-stabilization applications such as membrane protection and tank transfer operations.

Cold stabilization

BEVPOR PS



Polyethersulphone

0.45, 0.65 micron

- Validated microbial retention for effective stabilization
- 0.6m² filtration area

BEVPOR PS filters have been validated against typical beer spoilage organisms. Combined with easy integrity testing, the filters ensure the effective microbial stabilization of beer. The advanced polyethersulphone membrane has been configured to provide high flow and cost effective performance throughout the range of grades.

BEVPOR PW



Polyethersulphone

0.45, 0.65 micron

- Validated microbial retention for effective stabilization
- 0.6m² filtration area
- Integral prefilter layer

BEVPOR PW filters have been validated against typical beer spoilage organisms. Combined with easy integrity testing, the filters ensure the effective microbial stabilization of beer. The advanced polyethersulphone membrane in conjunction with the integral prefilter layer provides extended service life to blockage and improved filtration economics.

BEVPOR PH



Polyethersulphone

0.45, 0.65 micron

- Validated microbial retention for effective stabilization
- High filtration area – 0.8m²
- Integral prefilter layer

BEVPOR PH filters have been validated against typical beer spoilage organisms. Combined with easy integrity testing, the filters ensure the effective microbial stabilization of beer. The advanced, high area polyethersulphone membrane in conjunction with the integral prefilter layer will provide maximum service life to blockage and the optimum solution for beer stabilization.

Air / Gas filtration

HIGH FLOW BIO-X



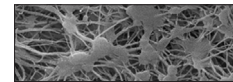
PTFE Impregnated Glass Fibre

0.01 micron sterilising

- 94% voids volume PTFE impregnated glass fibre
- Exceptional flow rates with low pressure drops
- Integrity testable by aerosol challenge

HIGH FLOW BIO-X combines proven depth filter technology and a pleated construction to provide retention down to 0.01 micron in gas. Flow rates typically 2-3 times that of membrane filters make HIGH FLOW BIO-X the filter that can dramatically reduce cartridge usage and installation size within the fermentation, food and beverage industries.

HIGH FLOW TETPOR II



Polypropylene Expanded PTFE

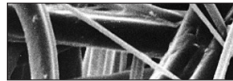
0.01 - 0.2 micron

- Assured biosecurity with absolute rated filtration
- High flow rates with low pressure drops
- High voids volume PTFE membrane

HIGH FLOW TETPOR II sterilisation filter cartridges offer exceptional filtration performance whilst providing the highest levels of biosecurity throughout the process industry. Operating at ambient temperature conditions, HIGH FLOW TETPOR II filter cartridges provide a cost-effective filtration solution.

Water treatment

PROPLEAT



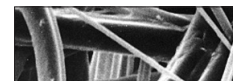
Polypropylene

1.0 – 10 micron

- Economical solution to particle removal

PROPLEAT filters have been developed to bridge the gap between meltblown depth filters and absolute pleated media filters. The all polypropylene construction exhibit 99% efficiency at their given retention rating, providing consistent and economical clarification in a diverse range of applications.

PARMAX



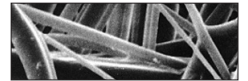
Polypropylene

1 – 20 microns

- Large diameter filtration for high flow rates and high capacity
- Absolute retention ratings for critical filtration

PARMAX filters offer the optimum solution to bulk water treatment where costs of equipment space are at a high premium. The use of PARMAX large diameter cartridge and housing offers a smaller footprint which is advantageous. The cartridges are available in absolute micron ratings from 1 to 20 microns.

PEPLYN PLUS



Polypropylene

0.6 – 25 micron

- Absolute particle retention at a range of micron grades
- Strong, pleated polypropylene construction designed for chemical CIP

PEPLYN PLUS filters are utilized for the clarification and pre-stabilization of a wide range of liquids for the food and beverage industry.

BEVPOR WG



Polyethersulphone

0.2 micron

- Validated microbial removal against waterborne bacteria

BEVPOR WG filters utilize a pleated PES membrane to remove bacterial contamination from water, ensuring the water supply entering the facility is of a safe standard to reduce the risk of biofilm formation / product spoilage.

BEVPOR MS



Polyethersulphone

0.2 micron

- Validated microbial removal against water borne bacteria
- Integrity testable

BEVPOR MS filters utilize a pleated PES membrane to remove bacterial contamination from water, ensuring the water supply entering the facility is of a safe standard to reduce the risk of biofilm formation / product spoilage. Added security is ensured through ease of repeat integrity testing.

Housings

VSH

- Multi-element sanitary liquid housing
- Designed specifically for the food and beverage industry
- High quality crevice free construction
- Available for 3 to 30 round filters



HBA

- Flow efficient range of air / gas housing
- Designed to maximize flow and minimize pressure drop
- Designed specifically for the food and beverage industry



HSV

- Industrial vent housing
- Direct connection to tank boss allows housing to be self supported
- Corrosion resistant 316L stainless steel
- Easy assembly and maintenance



HSL

- Single-element sanitary liquid housing
- Designed specifically for the food and beverage industry
- Sanitary vent, tri-clamp connections as standard
- Sanitary tri-clamp body closure as standard



HIL

- Industrial single-element liquid housing
- BSPP inlet / outlet standard connections
- Suitable replacement for plastic housings
- Suitable for cartridge types DOE or 222 and 226



HSA

- Flow efficient sanitary range of air / gas housing
- Designed specifically for the food and beverage industry
- Sanitary tri-clamp, vent and drain connections as standard
- Sanitary tri-clamp body closure as standard



VIS

- High efficiency steam filter housing
- Compatible with JUMBO element to maximize steam capacity



HBAHP

- Air / gas and steam housing
- For pressures up to 15 barg (232.06 psig) @ 205 °C (401 °F)
- Double bolted clamp for extra security
- Available with many connection types



Integrity testing equipment

VALAIRDATA 3

- Aerosol challenge testing
- Integrity testing of gas filters



BEVCHECK

- Pressure decay and diffusional flow testing
- Hand held portability with rechargeable battery option
- Flexible: suitable for use with compressed air or nitrogen



BEVCHECK PLUS

- Pressure decay and diffusional flow testing
- Convenient built-in printer provides printed test report
- Flexible: suitable for use with compressed air or nitrogen



Compressed air pre-treatment

OIL-X

- The most energy efficient filters available
- High quality ISO8573.1:2001 compressed air
- Running costs that start low and stay low



PCO₂

- Ensures compliance with quality guidelines published by the International Society for Beverage Technologies (ISBT)
- Protects drinks manufacturing processes from vapour impurities



MAXIGAS

- Low life-cycle ownership cost and elimination of costs associated with a cylinder supply
- On-demand functionality limits waste
- Energy efficient: operates from a small compressor



Parker Worldwide

Europe, Middle East, Africa

AE – United Arab Emirates,

Dubai
Tel: +971 4 8127100
parker.me@parker.com

AT – Austria, Wiener Neustadt

Tel: +43 (0)2622 23501-0
parker.austria@parker.com

AT – Eastern Europe, Wiener Neustadt

Tel: +43 (0)2622 23501 900
parker.easteurope@parker.com

AZ – Azerbaijan, Baku

Tel: +994 50 2233 458
parker.azerbaijan@parker.com

BE/LU – Belgium, Nivelles

Tel: +32 (0)67 280 900
parker.belgium@parker.com

BY – Belarus, Minsk

Tel: +375 17 209 9399
parker.belarus@parker.com

CH – Switzerland, Etoy

Tel: +41 (0)21 821 87 00
parker.switzerland@parker.com

CZ – Czech Republic, Klecany

Tel: +420 284 083 111
parker.czechrepublic@parker.com

DE – Germany, Kaarst

Tel: +49 (0)2131 4016 0
parker.germany@parker.com

DK – Denmark, Ballerup

Tel: +45 43 56 04 00
parker.denmark@parker.com

ES – Spain, Madrid

Tel: +34 902 330 001
parker.spain@parker.com

FI – Finland, Vantaa

Tel: +358 (0)20 753 2500
parker.finland@parker.com

FR – France, Contamine s/Arve

Tel: +33 (0)4 50 25 80 25
parker.france@parker.com

GR – Greece, Athens

Tel: +30 210 933 6450
parker.greece@parker.com

HU – Hungary, Budapest

Tel: +36 1 220 4155
parker.hungary@parker.com

IE – Ireland, Dublin

Tel: +353 (0)1 466 6370
parker.ireland@parker.com

IT – Italy, Corsico (MI)

Tel: +39 02 45 19 21
parker.italy@parker.com

KZ – Kazakhstan, Almaty

Tel: +7 7272 505 800
parker.easteurope@parker.com

NL – The Netherlands,

Oldenzaal
Tel: +31 (0)541 585 000
parker.nl@parker.com

NO – Norway, Asker

Tel: +47 66 75 34 00
parker.norway@parker.com

PL – Poland, Warsaw

Tel: +48 (0)22 573 24 00
parker.poland@parker.com

PT – Portugal, Leca da

Palmeira
Tel: +351 22 999 7360
parker.portugal@parker.com

RO – Romania, Bucharest

Tel: +40 21 252 1382
parker.romania@parker.com

RU – Russia, Moscow

Tel: +7 495 645-2156
parker.russia@parker.com

SE – Sweden, Spånga

Tel: +46 (0)8 59 79 50 00
parker.sweden@parker.com

SK – Slovakia, Banská Bystrica

Tel: +421 484 162 252
parker.slovakia@parker.com

SL – Slovenia, Novo Mesto

Tel: +386 7 337 6650
parker.slovenia@parker.com

TR – Turkey, Istanbul

Tel: +90 216 4997081
parker.turkey@parker.com

UA – Ukraine, Kiev

Tel: +380 44 494 2731
parker.ukraine@parker.com

UK – United Kingdom,

Warwick
Tel: +44 (0)1926 317 878
parker.uk@parker.com

ZA – South Africa, Kempton

Park
Tel: +27 (0)11 961 0700
parker.southafrica@parker.com

North America

CA – Canada, Milton, Ontario

Tel: +1 905 693 3000

US – USA, Cleveland

Tel: +1 216 896 3000

Asia Pacific

AU – Australia, Castle Hill

Tel: +61 (0)2-9634 7777

CN – China, Shanghai

Tel: +86 21 2899 5000

HK – Hong Kong

Tel: +852 2428 8008

IN – India, Mumbai

Tel: +91 22 6513 7081-85

JP – Japan, Tokyo

Tel: +81 (0)3 6408 3901

KR – South Korea, Seoul

Tel: +82 2 559 0400

MY – Malaysia, Shah Alam

Tel: +60 3 7849 0800

NZ – New Zealand, Mt

Wellington
Tel: +64 9 574 1744

SG – Singapore

Tel: +65 6887 6300

TH – Thailand, Bangkok

Tel: +662 717 8140

TW – Taiwan, Taipei

Tel: +886 2 2298 8987

South America

AR – Argentina, Buenos Aires

Tel: +54 3327 44 4129

BR – Brazil, Sao Jose dos

Campos
Tel: +55 12 4009 3500

CL – Chile, Santiago

Tel: +56 2 623 1216

MX – Mexico, Apodaca

Tel: +52 81 8156 6000

VE – Venezuela, Caracas

Tel: +58 212 238 5422

© 2012 Parker Hannifin Corporation

GL_BR_07_09/13 Rev. 1C

ООО "Моторы и Трансмиссия"

Беларусь, г. Минск,

Бетонный проезд 6

ps@mit.by

+375 29 339 51 39



Parker Hannifin Manufacturing Ltd

domnick hunter

Process Filtration - Europe

Durham Road

Birtley, Co. Durham

DH3 2SF, England

phone +44 (0)191 4105121

fax +44 (0)191 4105312

email: dhprocess@parker.com

www.parker.com/processfiltration

Parker Hannifin Corporation

domnick hunter

Process Filtration - North America

2340 Eastman Avenue

Oxnard, California, USA 93030

toll free: +1 877 784 2234

phone: +1 805 604 3400

fax: +1 805 604 3401

email: dhpsales.na@parker.com

www.parker.com/processfiltration